

# CLUB HORIZON

## FACTS AND INFORMATION



101-B Forest Drive, Knightdale, NC 27545  
 (Ph.) 919-266-2202 (Fax) 919-266-2210  
[www.clubhorizon.org](http://www.clubhorizon.org)

### *Working Together Towards Recovery*

**Mission:** To increase community acceptance and improve the quality of life for adults with serious mental illness by facilitating meaningful work, education, housing and social opportunities.

**What is Club Horizon:** Club Horizon is a community of people who are working together toward common goals. The Clubhouse community is intentionally designed to support individuals living with the effects of mental illness. Through participation in Club Horizon “members” are given opportunities to rejoin the worlds of friendships, family, employment, education, and to access the services and supports they may individually need. A Clubhouse is a restorative environment for people who have had their lives drastically disrupted, and need the support of others who believe that recovery from mental illness is possible for all.

#### Population Served:

- Adults ages 18 and over with a diagnosis of a serious mental illness.
- Residents living in Wake County.
- Persons who desire improved vocational, social, coping, or independent living skills.
- Persons able to meet their self-care and safety needs in group setting.

#### Demographics:

**Monthly Active Members: 72**  
**Average Daily Attendance: 36**

Females: 53%	Males: 47%
Black: 51%	Caucasian: 40%
Asian: 6%	Hispanic: 3%
Deaf or Hard of Hearing:	15%

#### Diagnosis:

Schizophrenia & Schizoaffective Disorder: 70%  
 Bipolar Disorder: 13% Major Depression: 13%  
 Other: 4%

#### Ages:

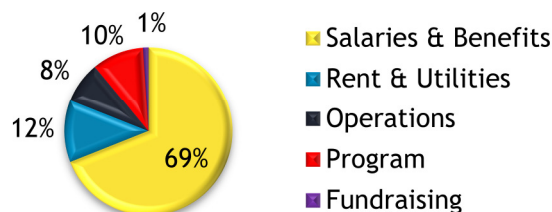
(18-30) 17	(31-40) 15	(41-50) 14
(51-60) 17	(61-69) 8	(70 & over) 1

#### Community Partners:

Crabtree Courtyard by Marriott  
 Wake County Local Management Entity  
 White Memorial Presbyterian Church  
 Carolina Chevelle Association  
 NAMI Wake County  
 Knightdale Baptist Church  
 Unitarian Universalist Fellowship of Raleigh  
 Knightdale Chamber of Commerce  
 Interfaith Food Shuttle  
 Residence Inn Crabtree  
 Toy's Cooking

#### FY 2010-2011 Information

##### Expenses



##### Revenue

